

4

3

2

1

THIS DRAWING UNPUBLISHED.

RELEASED FOR PUBUCATION

LOC

DIST

REVISIONS

P

LTR

DATE

DWN

APVD

2.92



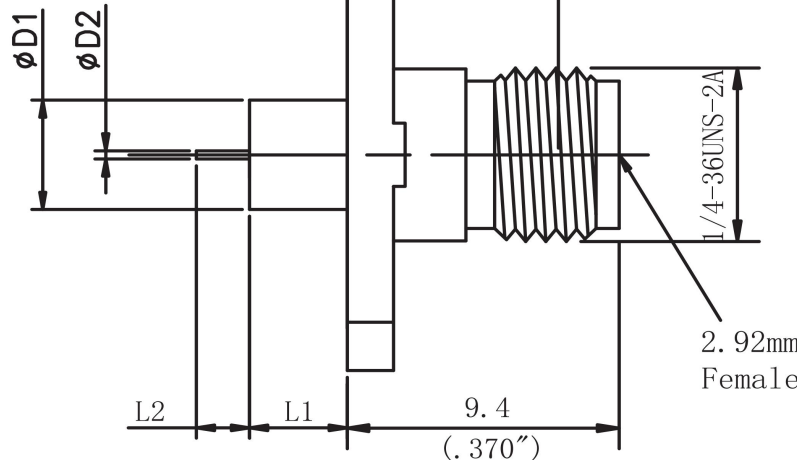
1.6  
(.065")

7.5  
(.295")

REF. PLANE

$\phi D1$

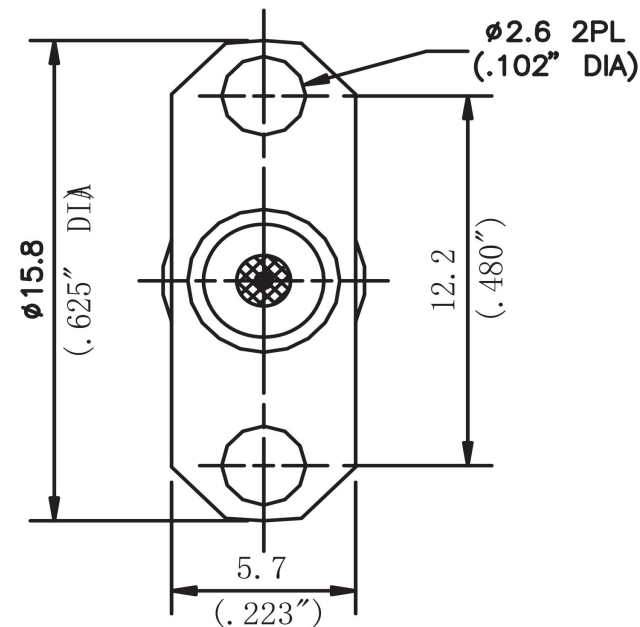
$\phi D2$

2.92mm  
Female

L2

L1

9.4  
(.370")



$\phi 15.8$   
(.625" DIA)

12.2  
(.480")

$\phi 2.6$  2PL  
(.102" DIA)

5.7  
(.223")

## NOTES:

## 1.ELECTRICAL:

- 1.1 IMPEDANCE: 50 $\Omega$
- 1.2 INSULATION RESISTANCE:5000M  $\Omega$
- 1.3 FREQUENCY RANGE: DC-40 GHz
- 1.4 DIELECTRIC WITHSTANDING VOLTAGE:  
1000V MAX AT SEA LEVEL
- 1.5 VSWR:  
 $\leq 1.15:1$
- 1.6 INSERTION LOSS: 0.25dB (MAX)

## 2.ENVIRONMENTAL:

- 2.1 TEMPERATURE RANGE: -55° to +165°

## 3.MATERIAL AND FINISH:

- 3.1 INNER CONDUCTOR MATERIAL:  
BERYLLIUM BRONZE GOLD PLATING
- 3.2 EXTERNAL CONDUCTOR MATERIAL:  
STAINLESS STEEL PASSIVATED
- 3.3 INSULATOR: PTFE

MODEL	$\phi D1$	$\phi D2$	L1	L2
XQY-29FM0403F04-M	4.0mm/0.158"	0.3mm/0.012"	1.4mm/0.055"	1.5mm/0.059"
XQY-29FM0503F04-M	4.0mm/0.158"	0.3mm/0.012"	3.0mm/0.118"	1.5mm/0.059"

Accept custom sizes and styles

THIS DRAWING IS A CONTROLLED DOCUMENT		21/10/2021	 Shenzhen xinqiyuan Technology Co., Ltd.		
		CHK			
DIMENSIONSMM		TOLERANCES UNLESS OTHERWISE SPECIFIED: $\pm 0.1$ Note: Dimensions (mm / [inch])	APVD	NAME 2.92mm Female RF Coaxial Connector Metal through	
			APPLICATION SPEC	SIZE A4	CAGE CODE 01021
			WEIGHT		

4

3

2

1